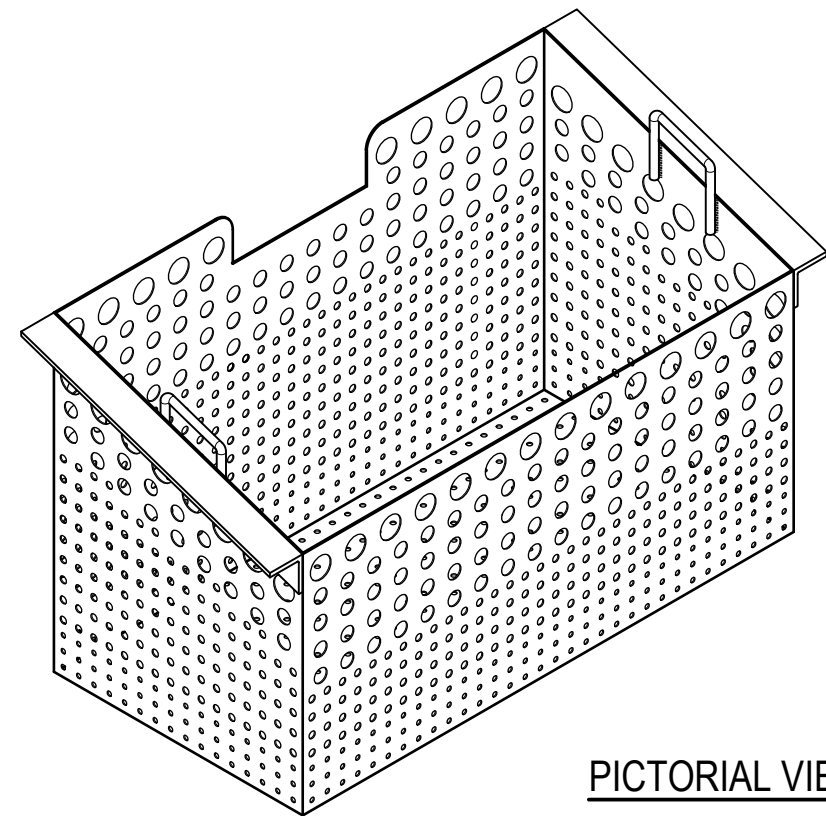
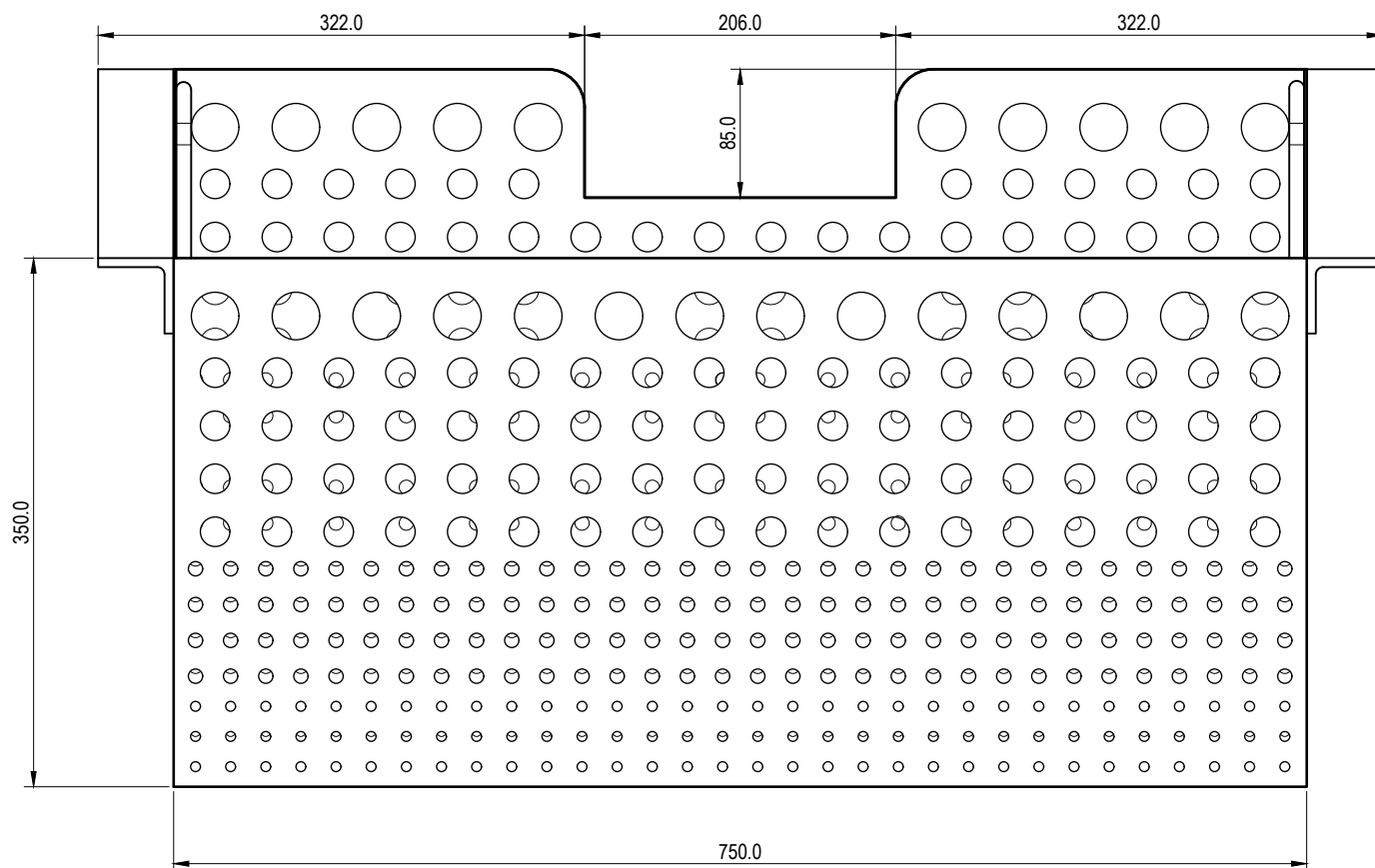


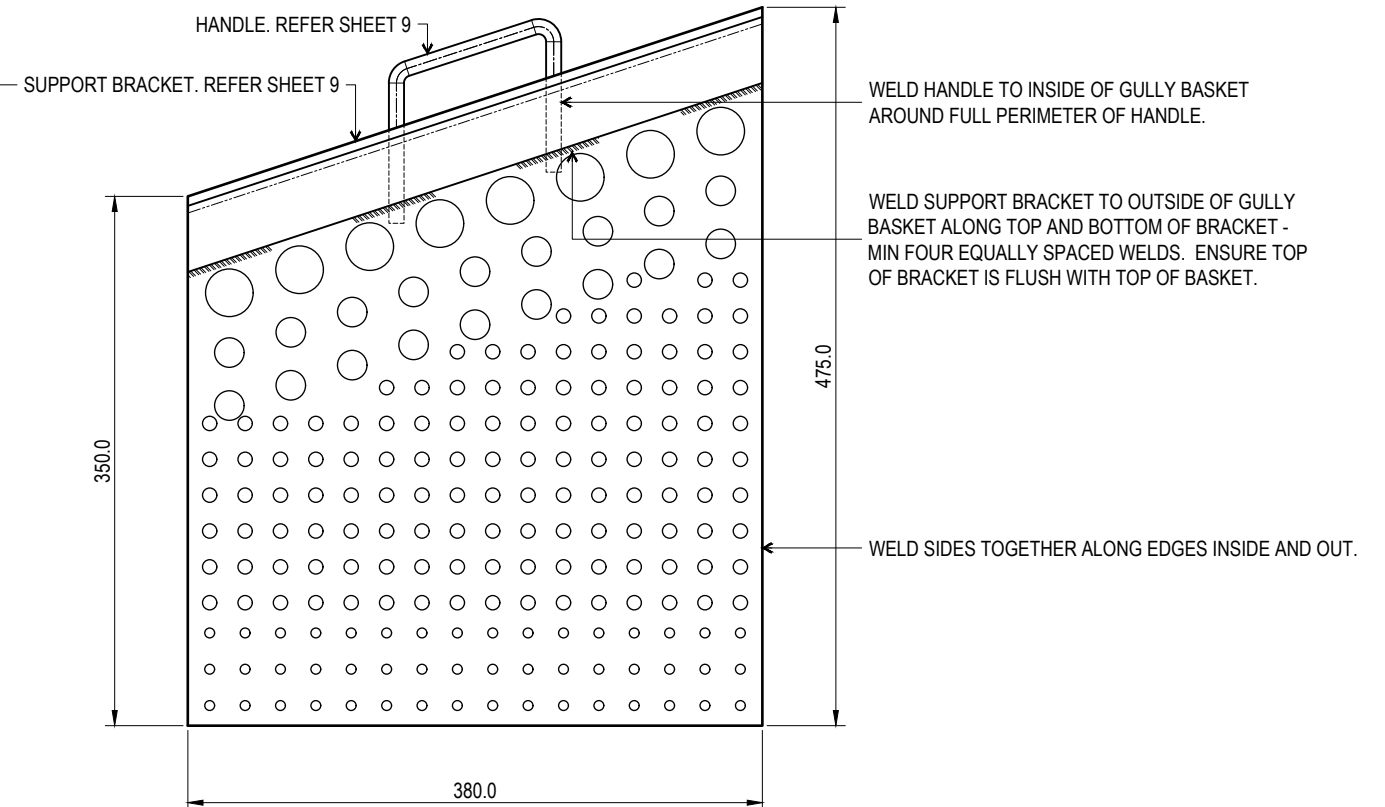
TOP ELEVATION



PICTORIAL VIEW



FRONT ELEVATION



SIDE ELEVATION

NOTES:

1. MATERIAL:
 - BASKET BODY: 1.6mm PERFORATED STEEL. REFER SHEET 2.
 - BASKET SUPPORT BRACKETS: 50x6mm ANGLE. REFER SHEET 5.
 - HANDLES: Ø10 STEEL BAR BENT TO SHAPE. REFER SHEET 5.
2. HOT DIP GALVANISE MILD STEEL COMPONENTS (WHERE USED) TO AS/NZS4680 AFTER FABRICATION.
3. ALL WELDS TO BE 4mm CFW UNLESS NOTED OTHERWISE.
4. REFER SHEET 2 FOR HOLES SIZES AND SETOUT.
5. ALL DIMENSIONS IN MILLIMETRES (U.N.O.).

SUPPORT BRACKET. REFER SHEET 9

SUPPORT BRACKET. REFER SHEET 9

HANDLE. REFER SHEET 9

WELD HANDLE TO INSIDE OF GULLY BASKET AROUND FULL PERIMETER OF HANDLE.

WELD SUPPORT BRACKET TO OUTSIDE OF GULLY BASKET ALONG TOP AND BOTTOM OF BRACKET - MIN FOUR EQUALLY SPACED WELDS. ENSURE TOP OF BRACKET IS FLUSH WITH TOP OF BASKET.

WELD SIDES TOGETHER ALONG EDGES INSIDE AND OUT.

THE PURPOSE OF THIS STANDARD DRAWING IS TO PROVIDE TYPICAL DETAILS THAT SUPPORT THE DESIRED OUTCOMES OF THE BRISBANE CITY PLAN 2014 AND ASSOCIATED PLANNING SCHEME POLICIES. THE FITNESS FOR PURPOSE OF THIS STANDARD DRAWING FOR A SPECIFIC PROJECT SHOULD BE ASSESSED AND ACCEPTED BY AN APPROPRIATELY QUALIFIED DESIGNER AND/OR REGISTERED PROFESSIONAL ENGINEER OF QUEENSLAND (RPEQ).



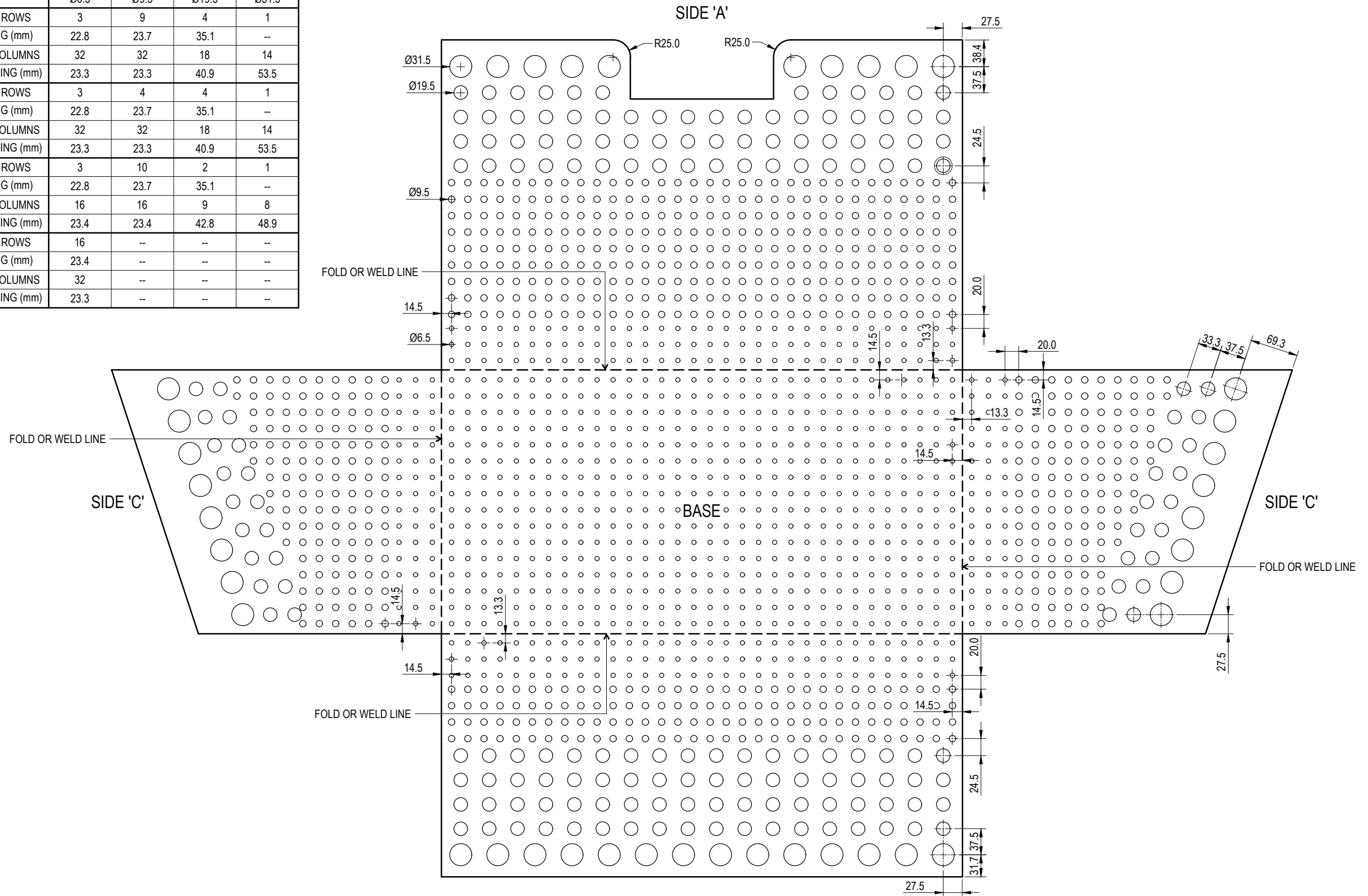
BRISBANE CITY COUNCIL STANDARD DRAWING

STEEL GULLY BASKET
SIZE 1 (LARGE) BASKET ASSEMBLY
SHEET 1 OF 10

PUBLISH DATE		SEP 2024
SCALE		NOT TO SCALE
DRAWING NUMBER		BSD-8060
ORIGINAL SIZE	REVISION	
A3	C	

DRAINAGE HOLE SETOUT

		HOLE SIZE (Ømm)			
		Ø6.5	Ø9.5	Ø19.5	Ø31.5
SIDE 'A'	NUMBER OF ROWS	3	9	4	1
	ROW SPACING (mm)	22.8	23.7	35.1	--
	NUMBER OF COLUMNS	32	32	18	14
	COLUMN SPACING (mm)	23.3	23.3	40.9	53.5
SIDE 'B'	NUMBER OF ROWS	3	4	4	1
	ROW SPACING (mm)	22.8	23.7	35.1	--
	NUMBER OF COLUMNS	32	32	18	14
	COLUMN SPACING (mm)	23.3	23.3	40.9	53.5
SIDE 'C' x 2	NUMBER OF ROWS	3	10	2	1
	ROW SPACING (mm)	22.8	23.7	35.1	--
	NUMBER OF COLUMNS	16	16	9	8
	COLUMN SPACING (mm)	23.4	23.4	42.8	48.9
BASE	NUMBER OF ROWS	16	--	--	--
	ROW SPACING (mm)	23.4	--	--	--
	NUMBER OF COLUMNS	32	--	--	--
	COLUMN SPACING (mm)	23.3	--	--	--



NOTES:

- MATERIAL:
 - 1.6mm THICK 316 MARINE GRADE STAINLESS STEEL (PREFERRED); OR
 - 1.6mm THICK MILD STEEL (GALVANISED AFTER FABRICATION - REFER SHEET 1).
- HOLES TO BE CLEANLY DRILLED, PUNCHED OR LASER CUT FROM STEEL SHEETING.
- ALL SHARP EDGES ARE TO BE REMOVED. THIS IS TO OCCUR PRIOR TO GALVANISING FOR BASKETS FABRICATED FROM MILD STEEL.
- HOLE DIAMETER TO BE MAINTAINED DURING AND AFTER GALVANISING IN BASKETS FABRICATED FROM MILD STEEL
- ALL DIMENSIONS IN MILLIMETRES (U.N.O.).

**SIDE 'B'
FABRICATION PATTERN**

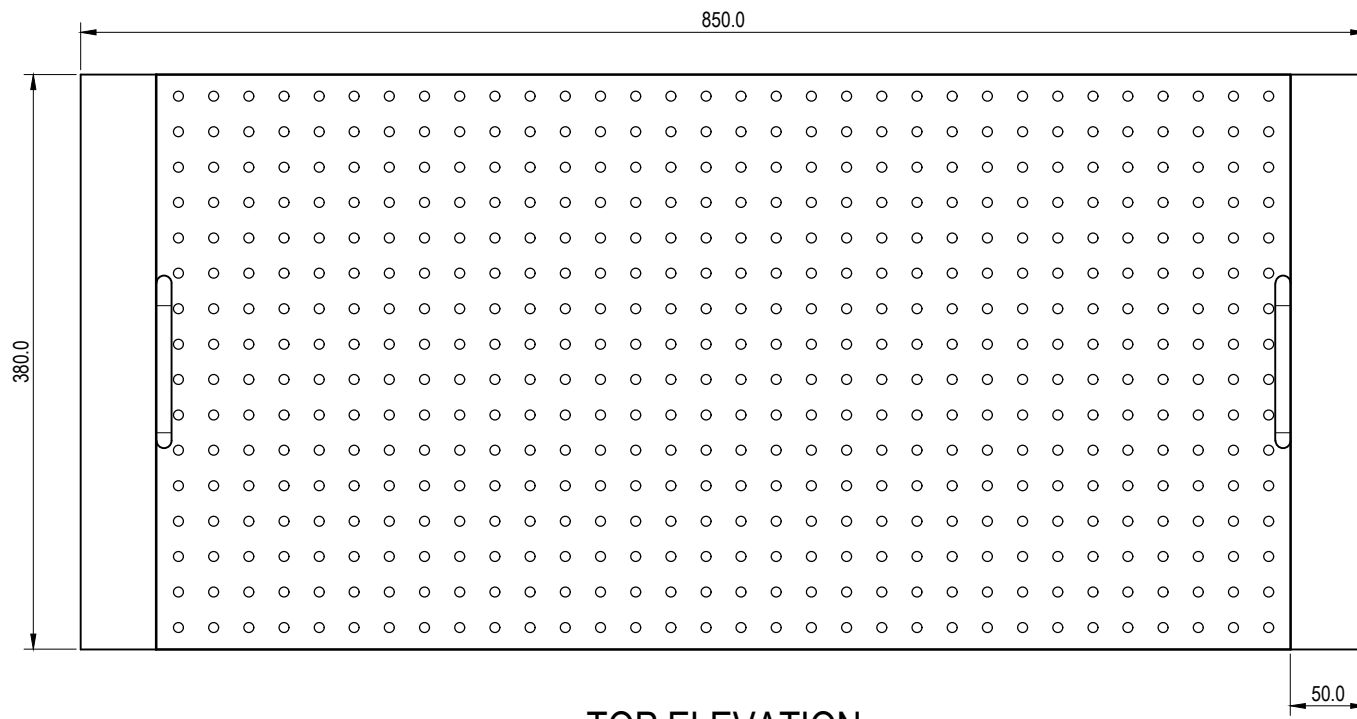
THE PURPOSE OF THIS STANDARD DRAWING IS TO PROVIDE TYPICAL DETAILS THAT SUPPORT THE DESIRED OUTCOMES OF THE BRISBANE CITY PLAN 2014 AND ASSOCIATED PLANNING SCHEME POLICIES. THE FITNESS FOR PURPOSE OF THIS STANDARD DRAWING FOR A SPECIFIC PROJECT SHOULD BE ASSESSED AND ACCEPTED BY AN APPROPRIATELY QUALIFIED DESIGNER AND/OR REGISTERED PROFESSIONAL ENGINEER OF QUEENSLAND (RPEQ).



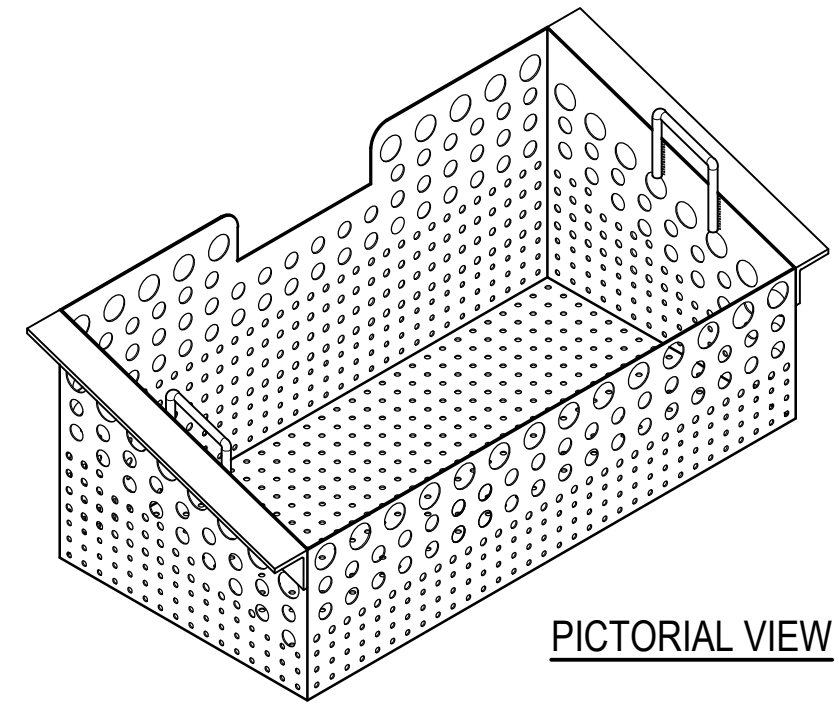
BRISBANE CITY COUNCIL STANDARD DRAWING

STEEL GULLY BASKET
SIZE 1 (LARGE) BASKET LAYOUT DETAILS
SHEET 2 OF 10

PUBLISH DATE		SEP 2024
SCALE		NOT TO SCALE
DRAWING NUMBER		BSD-8060
ORIGINAL SIZE	REVISION	
A3	C	

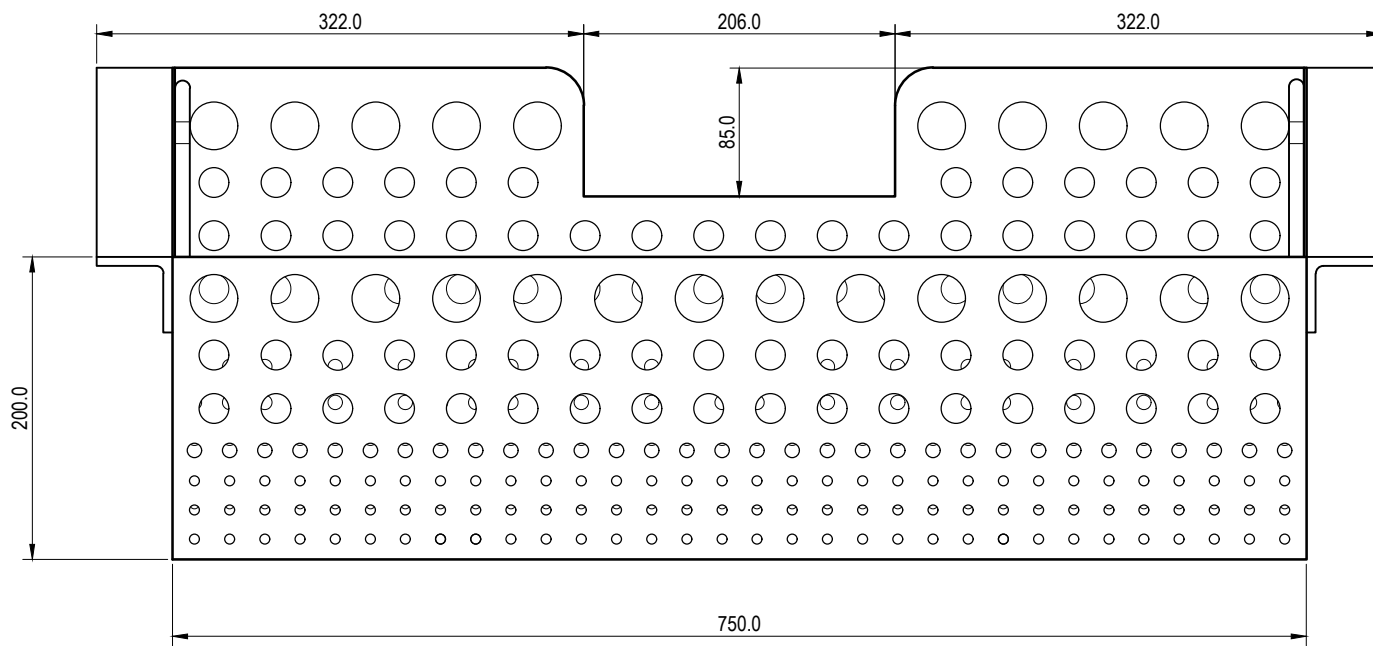


TOP ELEVATION

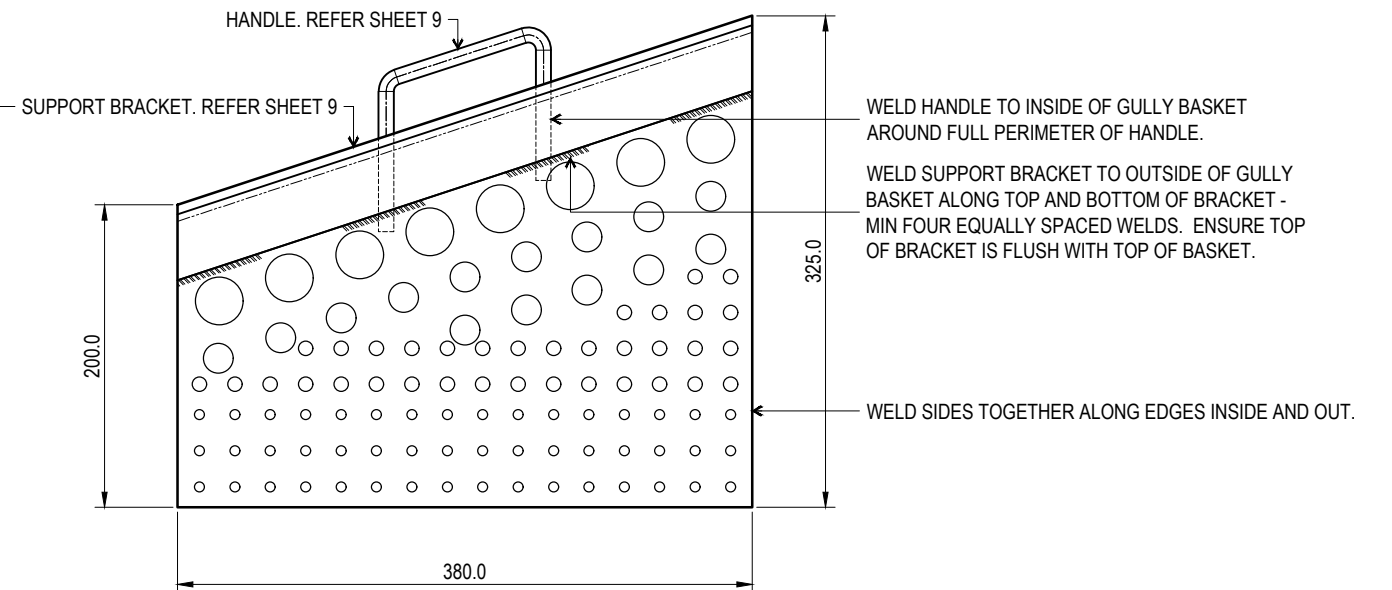


PICTORIAL VIEW

SUPPORT BRACKET. REFER SHEET 9



FRONT ELEVATION



SIDE ELEVATION

HANDLE. REFER SHEET 9

SUPPORT BRACKET. REFER SHEET 9

WELD HANDLE TO INSIDE OF GULLY BASKET AROUND FULL PERIMETER OF HANDLE.

WELD SUPPORT BRACKET TO OUTSIDE OF GULLY BASKET ALONG TOP AND BOTTOM OF BRACKET - MIN FOUR EQUALLY SPACED WELDS. ENSURE TOP OF BRACKET IS FLUSH WITH TOP OF BASKET.

WELD SIDES TOGETHER ALONG EDGES INSIDE AND OUT.

NOTES:

1. MATERIAL:
 - BASKET BODY: 1.6mm PERFORATED STEEL. REFER SHEET 4.
 - BASKET SUPPORT BRACKETS: 50x6mm ANGLE. REFER SHEET 5.
 - HANDLES: Ø10 STEEL BAR BENT TO SHAPE. REFER SHEET 5.
2. HOT DIP GALVANISE MILD STEEL COMPONENTS (WHERE USED) TO AS/NZS4680 AFTER FABRICATION.
3. ALL WELDS TO BE 4mm CFW UNLESS NOTED OTHERWISE.
4. REFER SHEET 4 FOR HOLE SIZES AND SETOUT.
5. ALL DIMENSIONS IN MILLIMETRES (U.N.O.).

THE PURPOSE OF THIS STANDARD DRAWING IS TO PROVIDE TYPICAL DETAILS THAT SUPPORT THE DESIRED OUTCOMES OF THE BRISBANE CITY PLAN 2014 AND ASSOCIATED PLANNING SCHEME POLICIES. THE FITNESS FOR PURPOSE OF THIS STANDARD DRAWING FOR A SPECIFIC PROJECT SHOULD BE ASSESSED AND ACCEPTED BY AN APPROPRIATELY QUALIFIED DESIGNER AND/OR REGISTERED PROFESSIONAL ENGINEER OF QUEENSLAND (RPEQ).



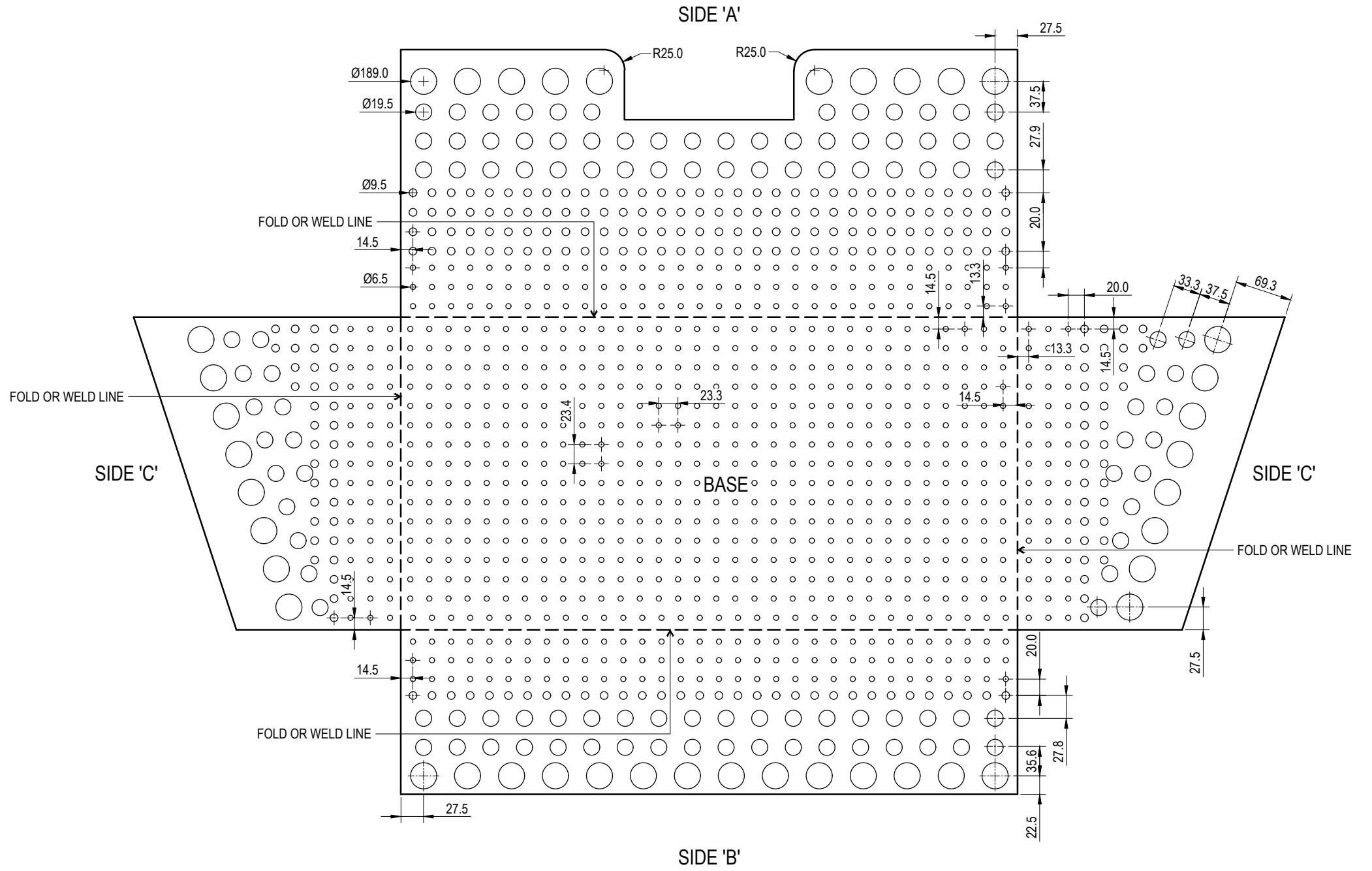
BRISBANE CITY COUNCIL STANDARD DRAWING

STEEL GULLY BASKET
SIZE 2 (SMALL) BASKET ASSEMBLY
SHEET 3 OF 10

PUBLISH DATE		SEP 2024
SCALE		NOT TO SCALE
DRAWING NUMBER		BSD-8060
ORIGINAL SIZE	REVISION	
A3	C	

DRAINAGE HOLE SETOUT

		HOLE SIZE (Ømm)			
		Ø6.5	Ø9.5	Ø19.5	Ø31.5
SIDE 'A'	NUMBER OF ROWS	3	4	3	1
	ROW SPACING (mm)	22.8	23.7	35.1	--
	NUMBER OF COLUMNS	32	32	18	14
	COLUMN SPACING (mm)	23.3	23.3	40.9	53.5
SIDE 'B'	NUMBER OF ROWS	3	1	2	1
	ROW SPACING (mm)	22.8	23.7	35.1	--
	NUMBER OF COLUMNS	32	32	18	14
	COLUMN SPACING (mm)	23.3	23.3	40.9	53.5
SIDE 'C' x 2	NUMBER OF ROWS	3	4	5	1
	ROW SPACING (mm)	24.0	23.7	33.3	--
	NUMBER OF COLUMNS	16	16	9	8
	COLUMN SPACING (mm)	23.4	23.4	42.8	48.9
BASE	NUMBER OF ROWS	16	--	--	--
	ROW SPACING (mm)	23.4	--	--	--
	NUMBER OF COLUMNS	32	--	--	--
	COLUMN SPACING (mm)	23.3	--	--	--



FABRICATION PATTERN

NOTES:

- MATERIAL:
 - 1.6mm THICK 316 MARINE GRADE STAINLESS STEEL (PREFERRED); OR
 - 1.6mm THICK MILD STEEL (GALVANISED AFTER FABRICATION - REFER SHEET 1).
- HOLES TO BE CLEANLY DRILLED, PUNCHED OR LASER CUT FROM STEEL SHEETING.
- ALL SHARP EDGES ARE TO BE REMOVED. THIS IS TO OCCUR PRIOR TO GALVANISING FOR BASKETS FABRICATED FROM MILD STEEL.
- HOLE DIAMETER TO BE MAINTAINED DURING AND AFTER GALVANISING IN BASKETS FABRICATED FROM MILD STEEL
- ALL DIMENSIONS IN MILLIMETRES (U.N.O.).

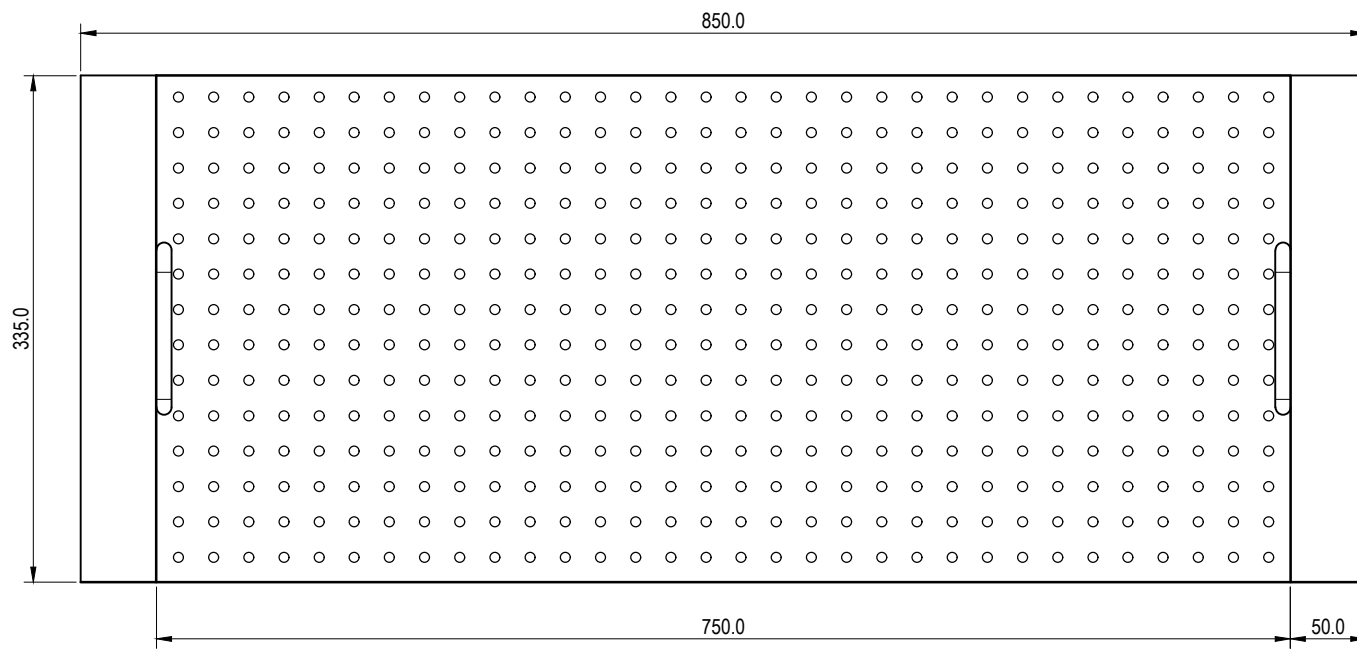
THE PURPOSE OF THIS STANDARD DRAWING IS TO PROVIDE TYPICAL DETAILS THAT SUPPORT THE DESIRED OUTCOMES OF THE BRISBANE CITY PLAN 2014 AND ASSOCIATED PLANNING SCHEME POLICIES. THE FITNESS FOR PURPOSE OF THIS STANDARD DRAWING FOR A SPECIFIC PROJECT SHOULD BE ASSESSED AND ACCEPTED BY AN APPROPRIATELY QUALIFIED DESIGNER AND/OR REGISTERED PROFESSIONAL ENGINEER OF QUEENSLAND (RPEQ).



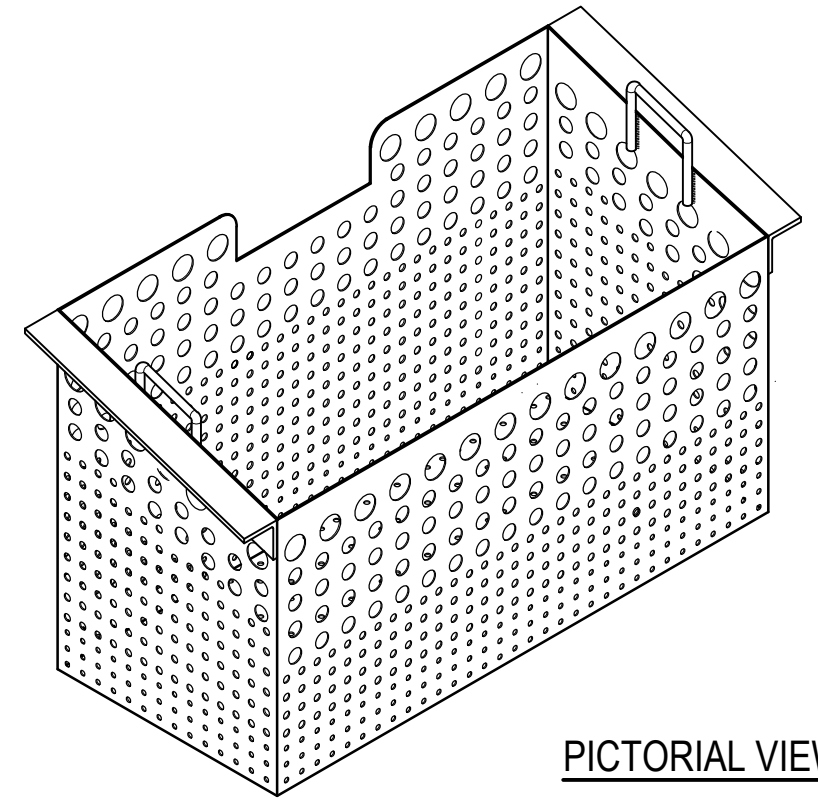
BRISBANE CITY COUNCIL STANDARD DRAWING

STEEL GULLY BASKET
SIZE 2 (SMALL) BASKET LAYOUT DETAILS
SHEET 4 OF 10

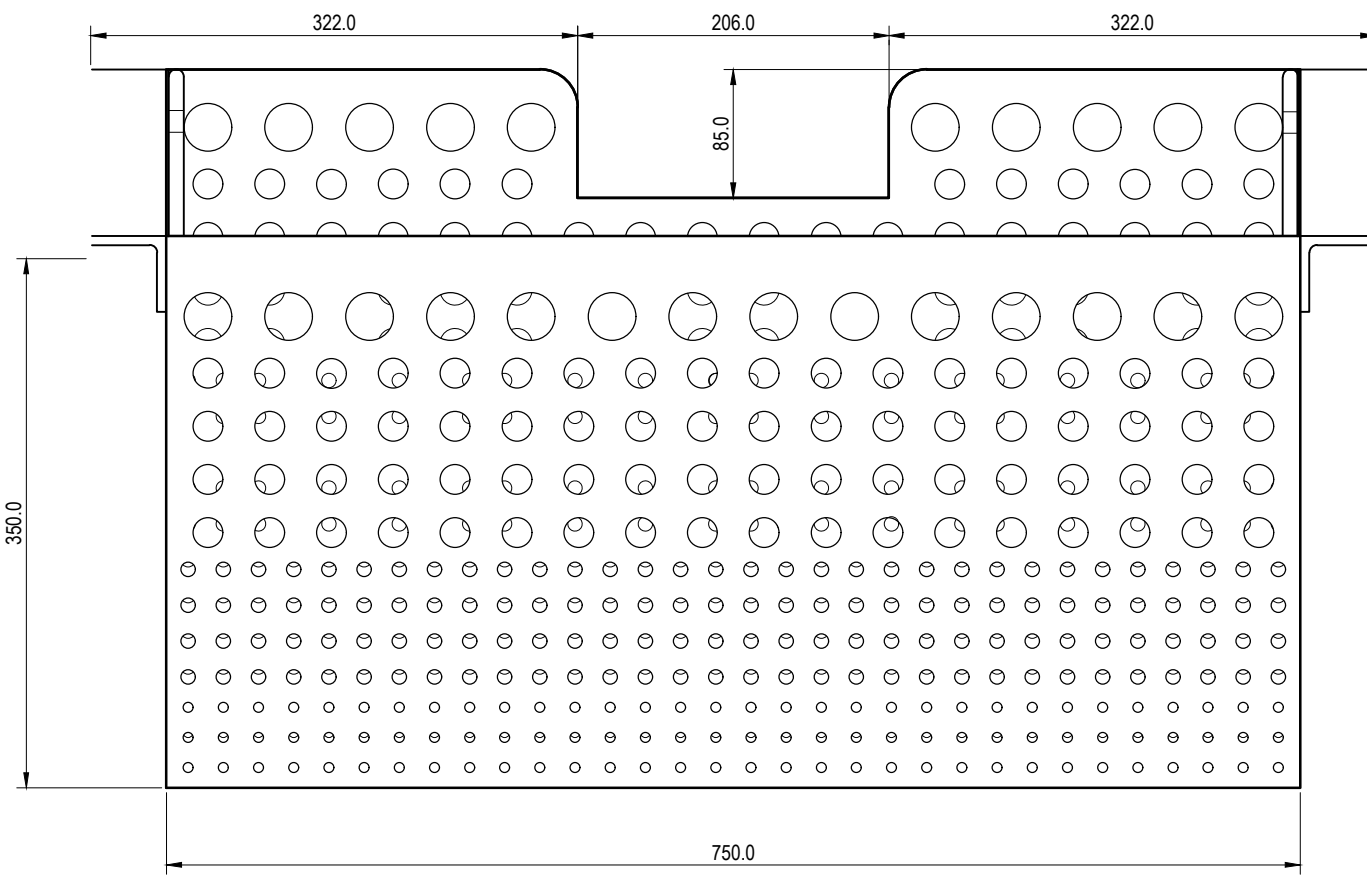
PUBLISH DATE	SEP 2024
SCALE	NOT TO SCALE
DRAWING NUMBER	BSD-8060
ORIGINAL SIZE	A3
REVISION	C



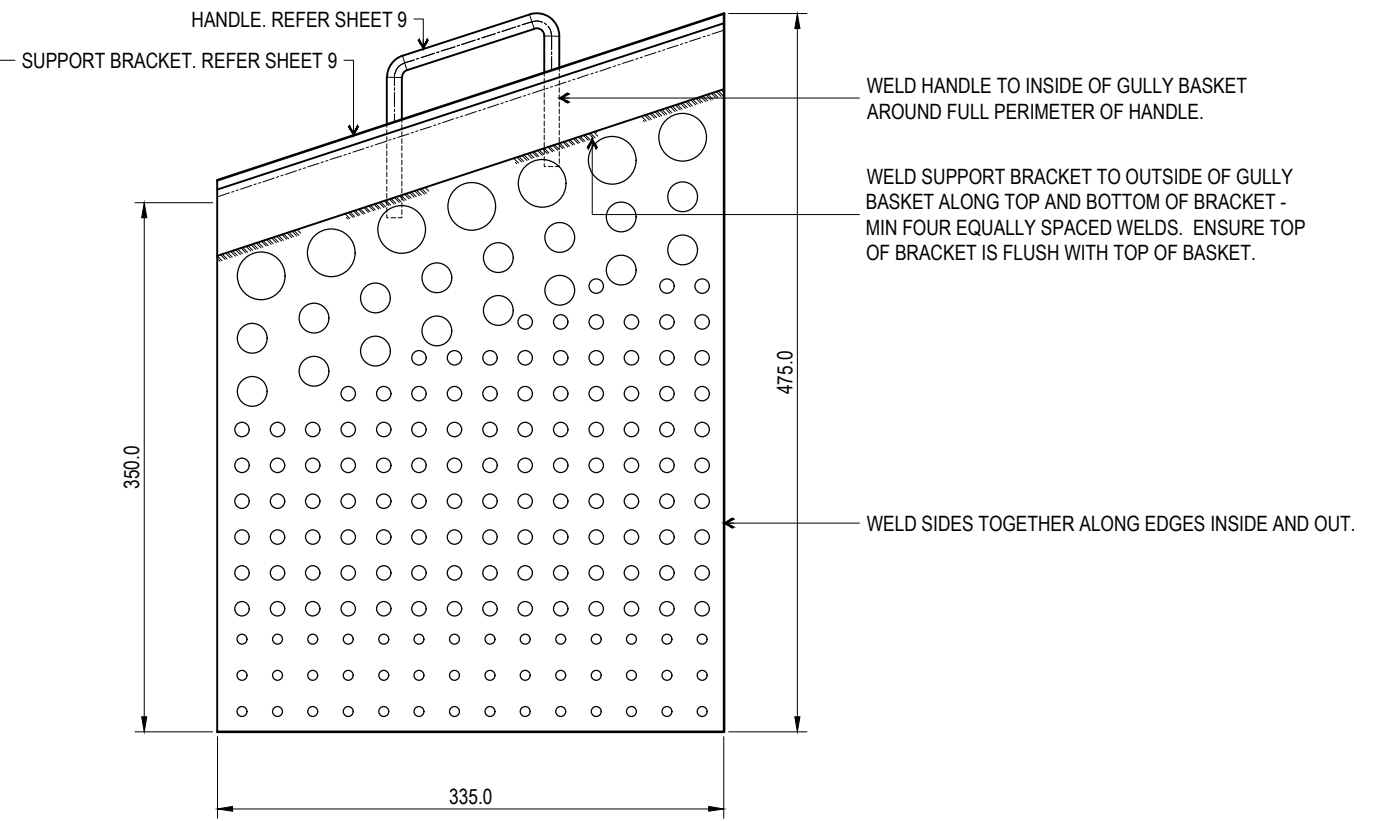
TOP ELEVATION



PICTORIAL VIEW




FRONT ELEVATION



SIDE ELEVATION

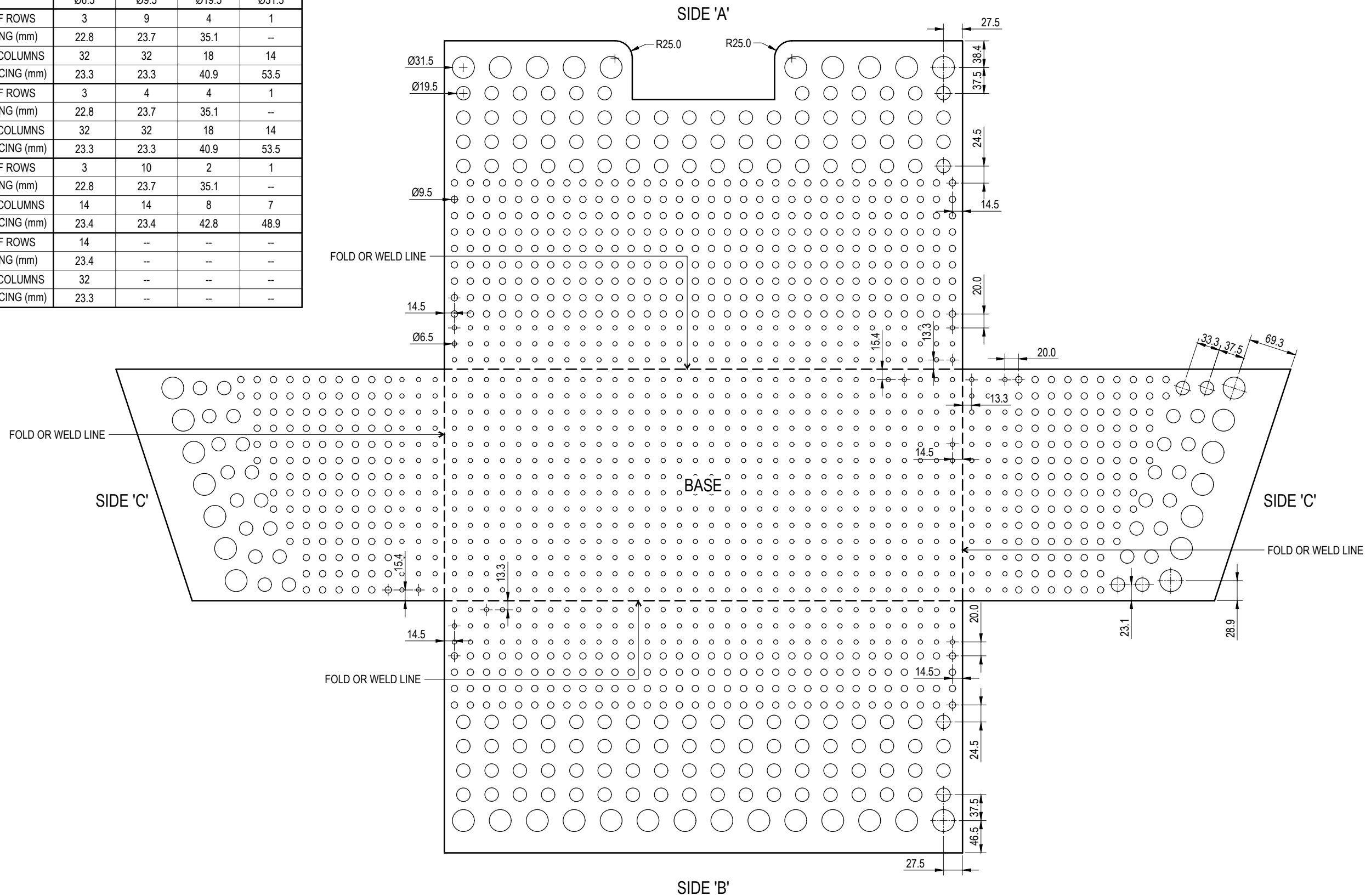
NOTES:

1. MATERIAL:
 - BASKET BODY: 1.6mm PERFORATED STEEL. REFER SHEET 2.
 - BASKET SUPPORT BRACKETS: 50x6mm ANGLE. REFER SHEET 5.
 - HANDLES: Ø10 STEEL BAR BENT TO SHAPE. REFER SHEET 5.
2. HOT DIP GALVANISE MILD STEEL COMPONENTS (WHERE USED) TO AS/NZS4680 AFTER FABRICATION.
3. ALL WELDS TO BE 4mm CFW UNLESS NOTED OTHERWISE.
4. REFER SHEET 2 FOR HOLES SIZES AND SETOUT.
5. ALL DIMENSIONS IN MILLIMETRES (U.N.O.).

<p>THE PURPOSE OF THIS STANDARD DRAWING IS TO PROVIDE TYPICAL DETAILS THAT SUPPORT THE DESIRED OUTCOMES OF THE BRISBANE CITY PLAN 2014 AND ASSOCIATED PLANNING SCHEME POLICIES. THE FITNESS FOR PURPOSE OF THIS STANDARD DRAWING FOR A SPECIFIC PROJECT SHOULD BE ASSESSED AND ACCEPTED BY AN APPROPRIATELY QUALIFIED DESIGNER AND/OR REGISTERED PROFESSIONAL ENGINEER OF QUEENSLAND (RPEQ).</p>		<p>BRISBANE CITY COUNCIL STANDARD DRAWING</p> <p>STEEL GULLY BASKET</p> <p>SIZE 3 (SLIMLINE LARGE) BASKET</p> <p>ASSEMBLY - SHEET 5 OF 10</p>	<table border="1" style="width: 100%; border-collapse: collapse;"> <tr> <td colspan="2">PUBLISH DATE</td> <td>SEP 2024</td> </tr> <tr> <td colspan="2">SCALE</td> <td>NOT TO SCALE</td> </tr> <tr> <td colspan="2">DRAWING NUMBER</td> <td>BSD-8060</td> </tr> <tr> <td>ORIGINAL SIZE</td> <td>REVISION</td> <td></td> </tr> <tr> <td>A3</td> <td>C</td> <td></td> </tr> </table>	PUBLISH DATE		SEP 2024	SCALE		NOT TO SCALE	DRAWING NUMBER		BSD-8060	ORIGINAL SIZE	REVISION		A3	C	
PUBLISH DATE		SEP 2024																
SCALE		NOT TO SCALE																
DRAWING NUMBER		BSD-8060																
ORIGINAL SIZE	REVISION																	
A3	C																	

DRAINAGE HOLE SETOUT

		HOLE SIZE (Ømm)			
		Ø6.5	Ø9.5	Ø19.5	Ø31.5
SIDE 'A'	NUMBER OF ROWS	3	9	4	1
	ROW SPACING (mm)	22.8	23.7	35.1	--
	NUMBER OF COLUMNS	32	32	18	14
	COLUMN SPACING (mm)	23.3	23.3	40.9	53.5
SIDE 'B'	NUMBER OF ROWS	3	4	4	1
	ROW SPACING (mm)	22.8	23.7	35.1	--
	NUMBER OF COLUMNS	32	32	18	14
	COLUMN SPACING (mm)	23.3	23.3	40.9	53.5
SIDE 'C' x 2	NUMBER OF ROWS	3	10	2	1
	ROW SPACING (mm)	22.8	23.7	35.1	--
	NUMBER OF COLUMNS	14	14	8	7
	COLUMN SPACING (mm)	23.4	23.4	42.8	48.9
BASE	NUMBER OF ROWS	14	--	--	--
	ROW SPACING (mm)	23.4	--	--	--
	NUMBER OF COLUMNS	32	--	--	--
	COLUMN SPACING (mm)	23.3	--	--	--



NOTES:

- MATERIAL:
 - 1.6mm THICK 316 MARINE GRADE STAINLESS STEEL (PREFERRED); OR
 - 1.6mm THICK MILD STEEL (GALVANISED AFTER FABRICATION - REFER SHEET 1).
- HOLES TO BE CLEANLY DRILLED, PUNCHED OR LASER CUT FROM STEEL SHEETING.
- ALL SHARP EDGES ARE TO BE REMOVED. THIS IS TO OCCUR PRIOR TO GALVANISING FOR BASKETS FABRICATED FROM MILD STEEL.
- HOLE DIAMETER TO BE MAINTAINED DURING AND AFTER GALVANISING IN BASKETS FABRICATED FROM MILD STEEL
- ALL DIMENSIONS IN MILLIMETRES (U.N.O.).

FABRICATION PATTERN

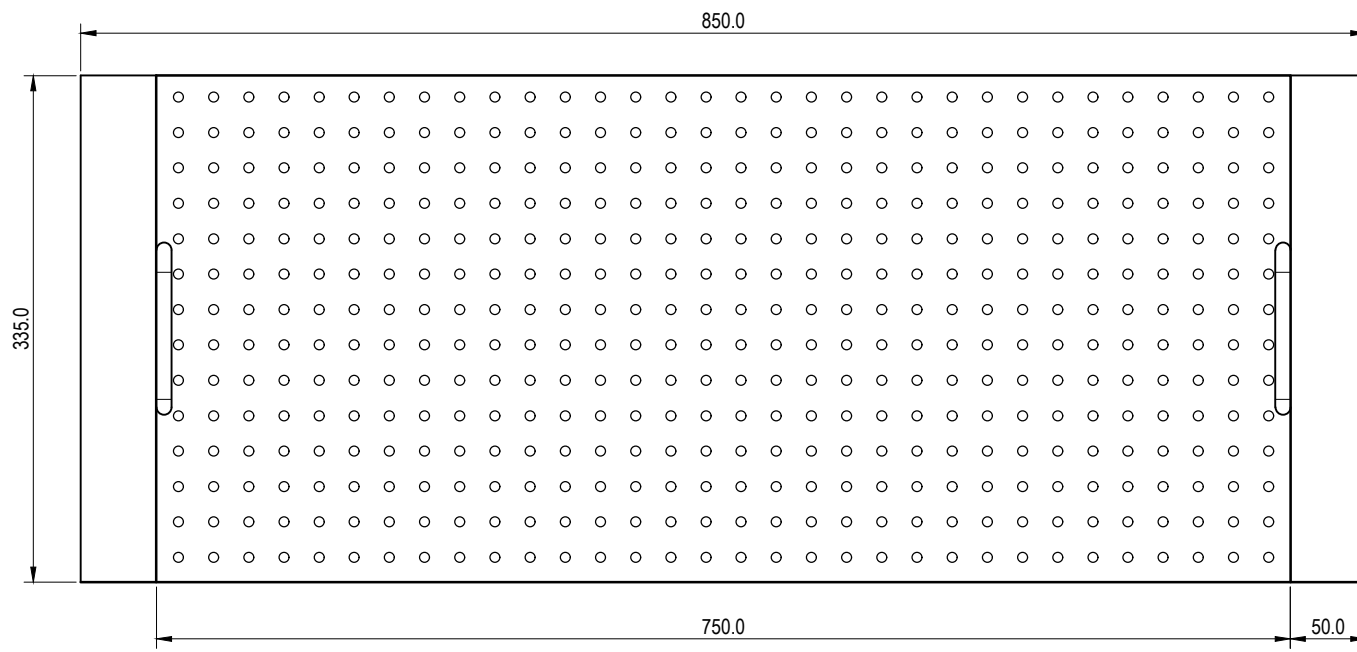
THE PURPOSE OF THIS STANDARD DRAWING IS TO PROVIDE TYPICAL DETAILS THAT SUPPORT THE DESIRED OUTCOMES OF THE BRISBANE CITY PLAN 2014 AND ASSOCIATED PLANNING SCHEME POLICIES. THE FITNESS FOR PURPOSE OF THIS STANDARD DRAWING FOR A SPECIFIC PROJECT SHOULD BE ASSESSED AND ACCEPTED BY AN APPROPRIATELY QUALIFIED DESIGNER AND/OR REGISTERED PROFESSIONAL ENGINEER OF QUEENSLAND (RPEQ).



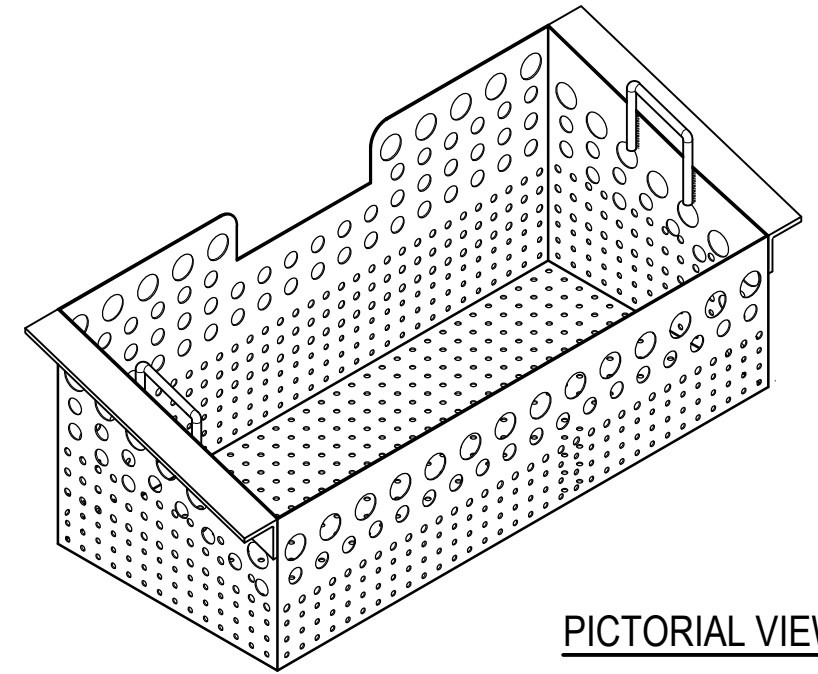
BRISBANE CITY COUNCIL STANDARD DRAWING

STEEL GULLY BASKET
 SIZE 3 (SLIMLINE LARGE) BASKET LAYOUT
 DETAILS - SHEET 6 OF 10

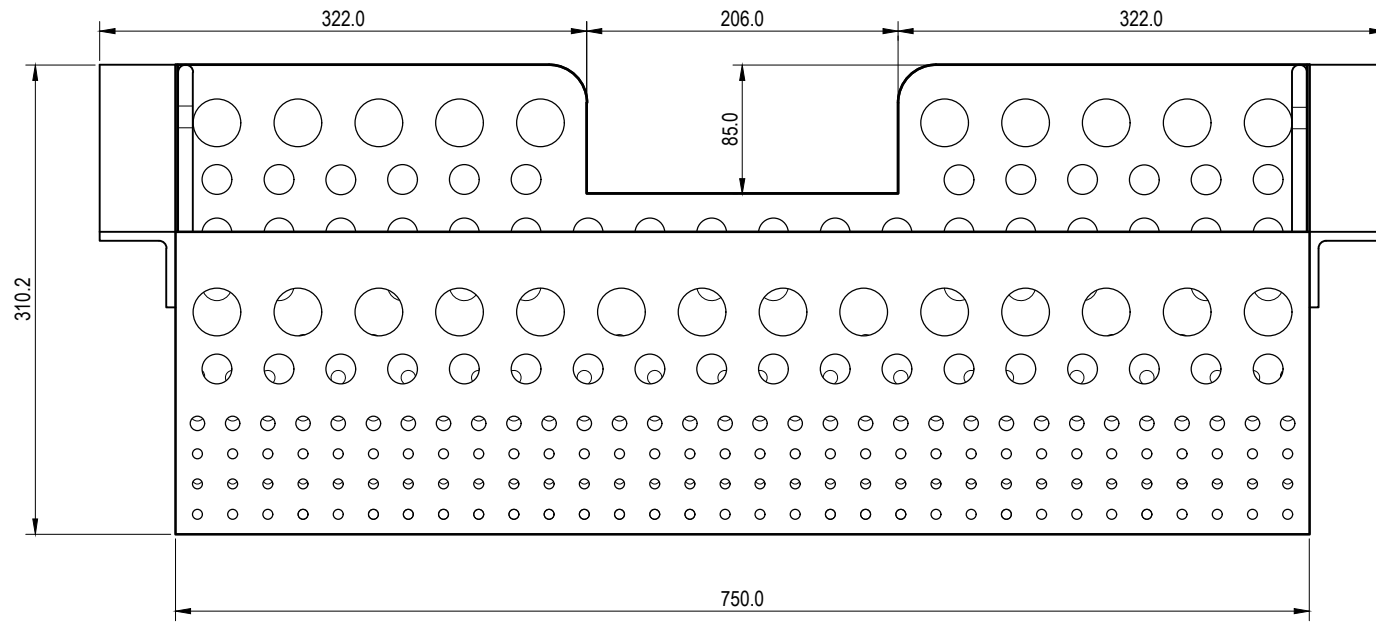
PUBLISH DATE		SEP 2024
SCALE		NOT TO SCALE
DRAWING NUMBER		BSD-8060
ORIGINAL SIZE	REVISION	
A3	C	



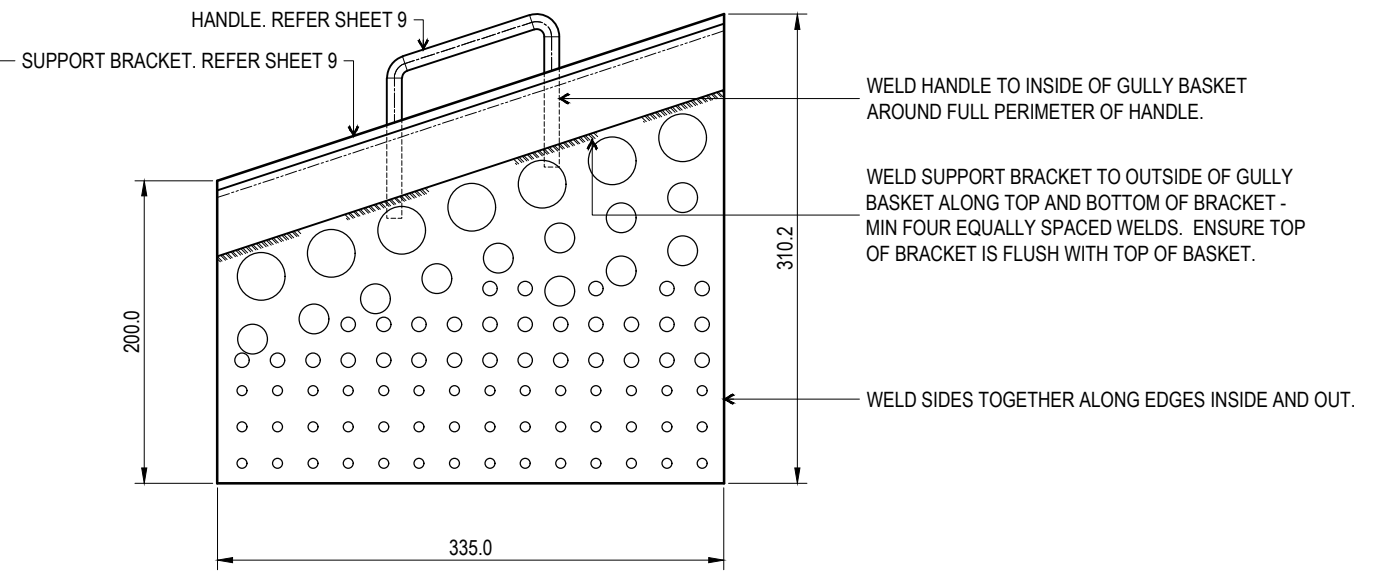
TOP ELEVATION



PICTORIAL VIEW



FRONT ELEVATION



SIDE ELEVATION

NOTES:

1. MATERIAL:
 - BASKET BODY: 1.6mm PERFORATED STEEL. REFER SHEET 2.
 - BASKET SUPPORT BRACKETS: 50x6mm ANGLE. REFER SHEET 5.
 - HANDLES: Ø10 STEEL BAR BENT TO SHAPE. REFER SHEET 5.
2. HOT DIP GALVANISE MILD STEEL COMPONENTS (WHERE USED) TO AS/NZS4680 AFTER FABRICATION.
3. ALL WELDS TO BE 4mm CFW UNLESS NOTED OTHERWISE.
4. REFER SHEET 2 FOR HOLES SIZES AND SETOUT.
5. ALL DIMENSIONS IN MILLIMETRES (U.N.O.).

THE PURPOSE OF THIS STANDARD DRAWING IS TO PROVIDE TYPICAL DETAILS THAT SUPPORT THE DESIRED OUTCOMES OF THE BRISBANE CITY PLAN 2014 AND ASSOCIATED PLANNING SCHEME POLICIES. THE FITNESS FOR PURPOSE OF THIS STANDARD DRAWING FOR A SPECIFIC PROJECT SHOULD BE ASSESSED AND ACCEPTED BY AN APPROPRIATELY QUALIFIED DESIGNER AND/OR REGISTERED PROFESSIONAL ENGINEER OF QUEENSLAND (RPEQ).



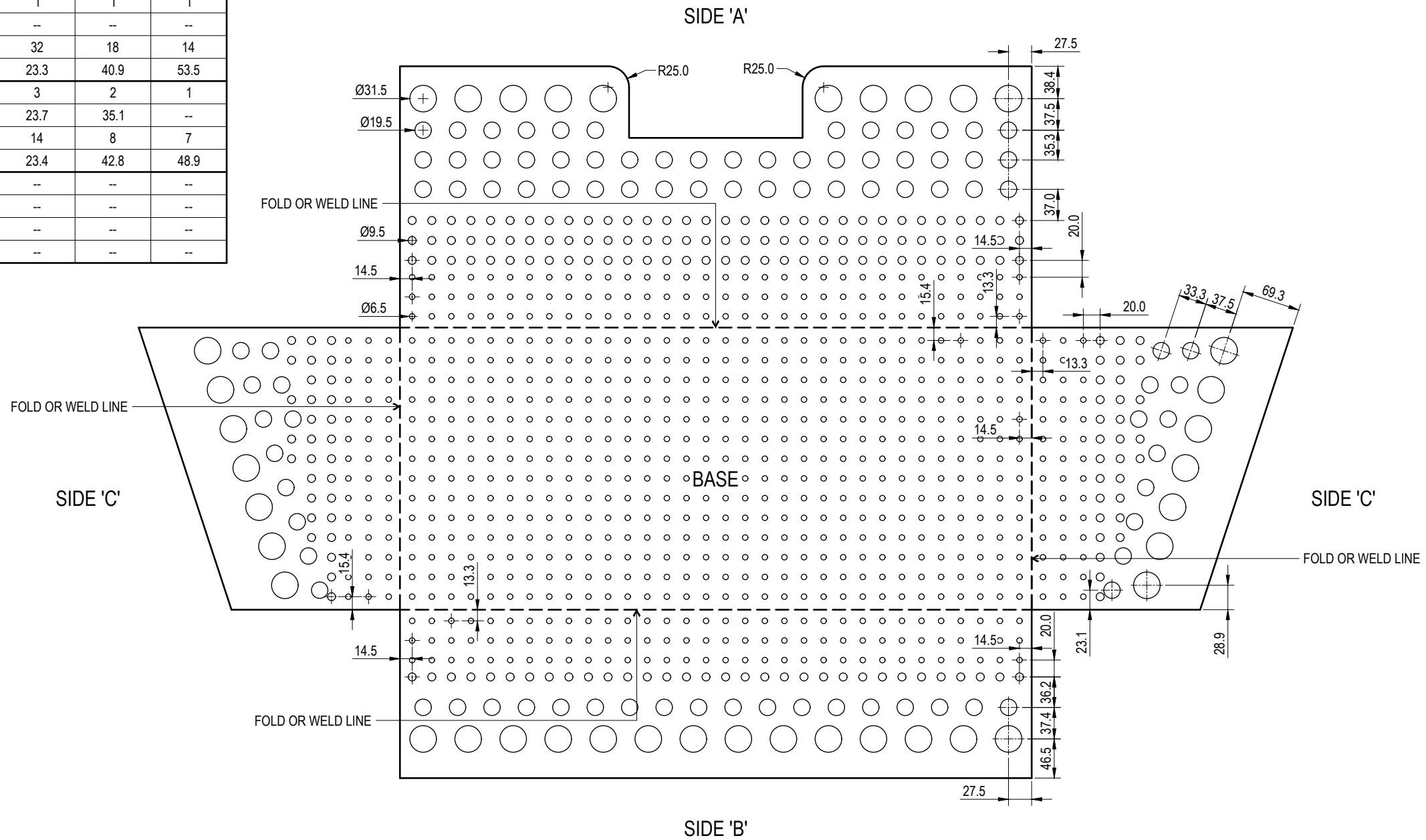
BRISBANE CITY COUNCIL STANDARD DRAWING

STEEL GULLY BASKET
SIZE 4 (SLIMLINE SMALL) BASKET
ASSEMBLY - SHEET 7 OF 10

PUBLISH DATE		SEP 2024
SCALE		NOT TO SCALE
DRAWING NUMBER		BSD-8060
ORIGINAL SIZE	REVISION	
A3	C	

DRAINAGE HOLE SETOUT

		HOLE SIZE (Ømm)			
		Ø6.5	Ø9.5	Ø19.5	Ø31.5
SIDE 'A'	NUMBER OF ROWS	3	3	4	1
	ROW SPACING (mm)	22.8	23.7	35.1	--
	NUMBER OF COLUMNS	32	32	18	14
	COLUMN SPACING (mm)	23.3	23.3	40.9	53.5
SIDE 'B'	NUMBER OF ROWS	3	1	1	1
	ROW SPACING (mm)	22.8	--	--	--
	NUMBER OF COLUMNS	32	32	18	14
	COLUMN SPACING (mm)	23.3	23.3	40.9	53.5
SIDE 'C' x 2	NUMBER OF ROWS	3	3	2	1
	ROW SPACING (mm)	22.8	23.7	35.1	--
	NUMBER OF COLUMNS	14	14	8	7
	COLUMN SPACING (mm)	23.4	23.4	42.8	48.9
BASE	NUMBER OF ROWS	14	--	--	--
	ROW SPACING (mm)	23.4	--	--	--
	NUMBER OF COLUMNS	32	--	--	--
	COLUMN SPACING (mm)	23.3	--	--	--



FABRICATION PATTERN

NOTES:

- MATERIAL:
 - 1.6mm THICK 316 MARINE GRADE STAINLESS STEEL (PREFERRED); OR
 - 1.6mm THICK MILD STEEL (GALVANISED AFTER FABRICATION - REFER SHEET 1).
- HOLES TO BE CLEANLY DRILLED, PUNCHED OR LASER CUT FROM STEEL SHEETING.
- ALL SHARP EDGES ARE TO BE REMOVED. THIS IS TO OCCUR PRIOR TO GALVANISING FOR BASKETS FABRICATED FROM MILD STEEL.
- HOLE DIAMETER TO BE MAINTAINED DURING AND AFTER GALVANISING IN BASKETS FABRICATED FROM MILD STEEL
- ALL DIMENSIONS IN MILLIMETRES (U.N.O.).

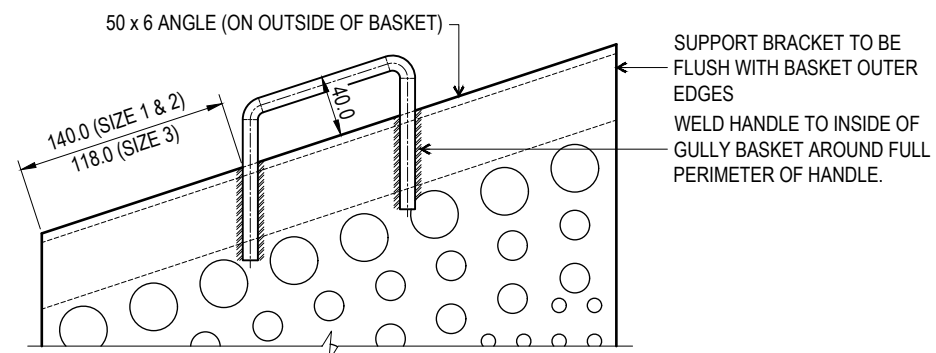
THE PURPOSE OF THIS STANDARD DRAWING IS TO PROVIDE TYPICAL DETAILS THAT SUPPORT THE DESIRED OUTCOMES OF THE BRISBANE CITY PLAN 2014 AND ASSOCIATED PLANNING SCHEME POLICIES. THE FITNESS FOR PURPOSE OF THIS STANDARD DRAWING FOR A SPECIFIC PROJECT SHOULD BE ASSESSED AND ACCEPTED BY AN APPROPRIATELY QUALIFIED DESIGNER AND/OR REGISTERED PROFESSIONAL ENGINEER OF QUEENSLAND (RPEQ).



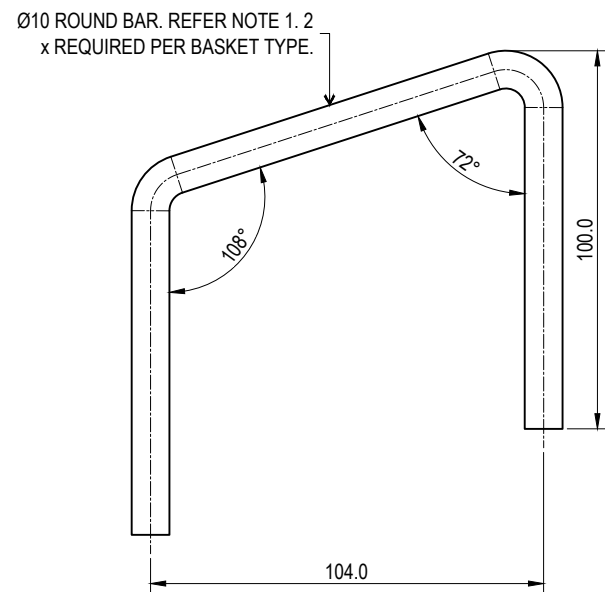
BRISBANE CITY COUNCIL STANDARD DRAWING

STEEL GULLY BASKET
SIZE 4 (SLIMLINE SMALL) BASKET
LAYOUT DETAILS - SHEET 8 OF 10

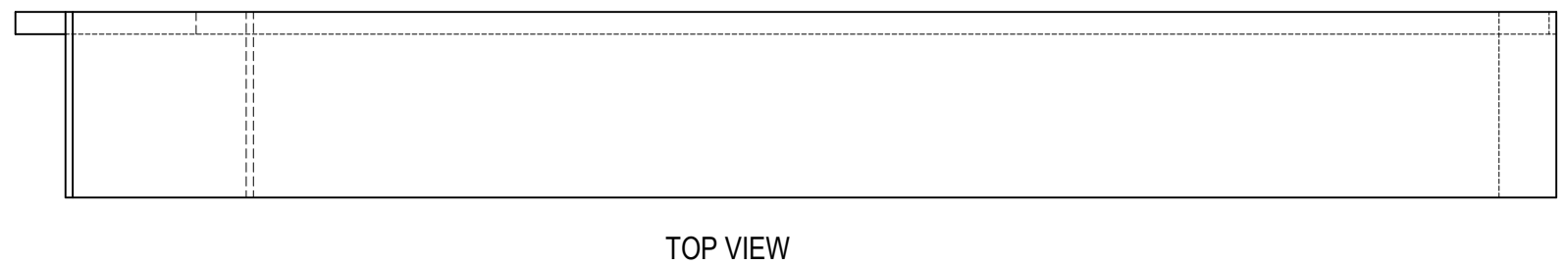
PUBLISH DATE		SEP 2024
SCALE		NOT TO SCALE
DRAWING NUMBER		BSD-8060
ORIGINAL SIZE	REVISION	
A3	C	



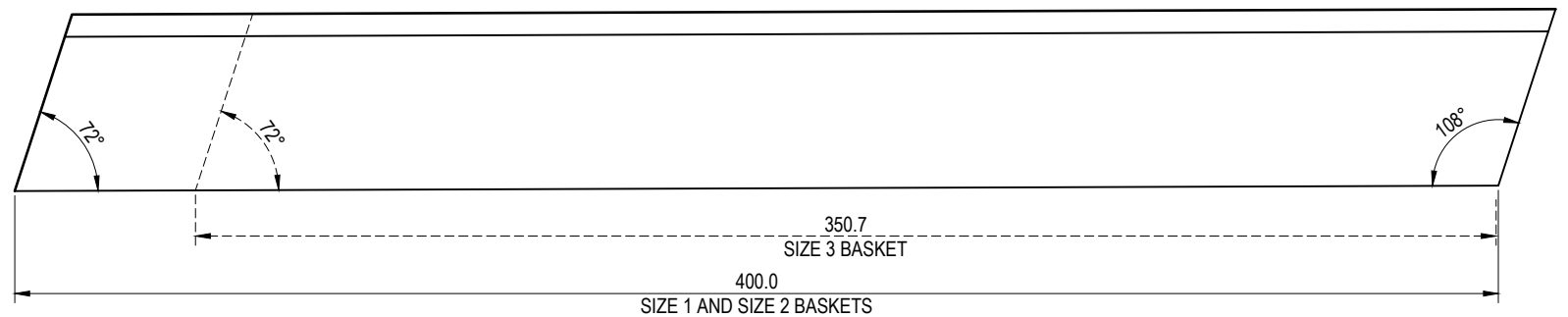
HANDLE ATTACHMENT
(INSIDE OF GULLY BASKET)



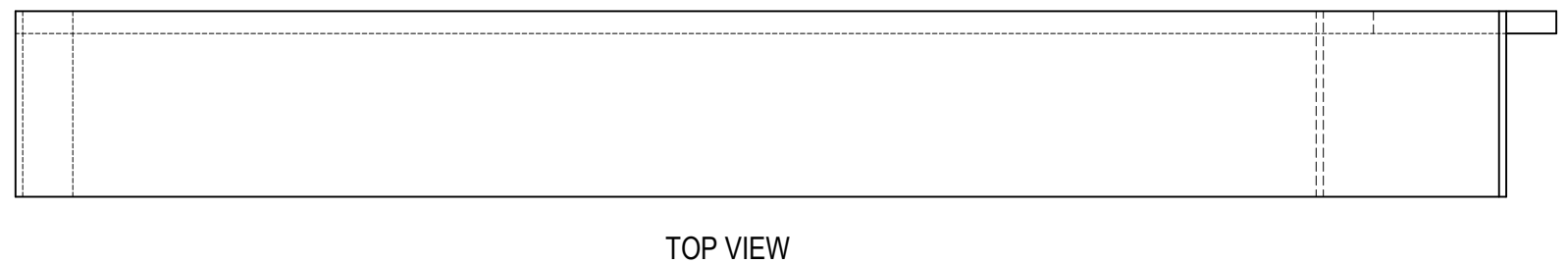
HANDLE



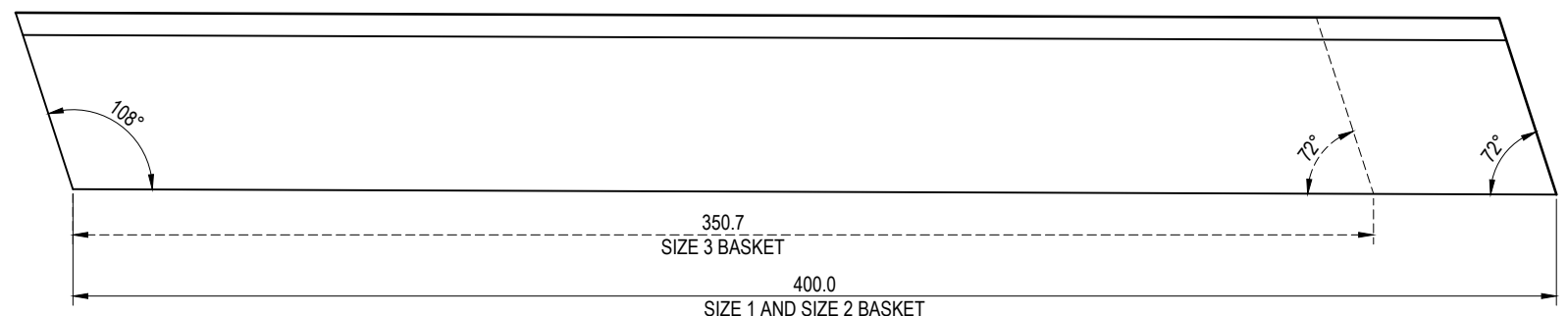
TOP VIEW



RIGHT BASKET SUPPORT BRACKET
50 x 6 ANGLE. REFER NOTE 1.
ELEVATION



TOP VIEW



LEFT BASKET SUPPORT BRACKET
50 x 6 ANGLE. REFER NOTE 1.
ELEVATION

NOTES:

1. SUPPORT BRACKET AND HANDLE MATERIAL TO MATCH BASKET MATERIAL.
2. BASKET SUPPORT BRACKETS: 50 x 6 ANGLE.
3. PAIR OF BASKET SUPPORT BRACKETS (ONE LEFT, ONE RIGHT) REQUIRED FOR EACH GULLY BASKET (TYPE 1 (LARGE), TYPE 2 (SMALL) AND TYPE 3 (SLIMLINE)).
4. HANDLE: Ø10 ROUND BAR.
5. HANDLE ARE SAME SIZE AND POSITION FOR TYPE 1 (LARGE) AND TYPE 2 (SMALL) GULLY BASKETS.
6. ALL WELDS TO BE 4mm CFW UNLESS NOTED OTHERWISE.
7. ALL SHARP EDGES ARE TO BE REMOVED. THIS IS TO OCCUR PRIOR TO GALVANISING FOR BASKETS FABRICATED FROM MILD STEEL.
8. ALL DIMENSIONS IN MILLIMETRES (U.N.O.).

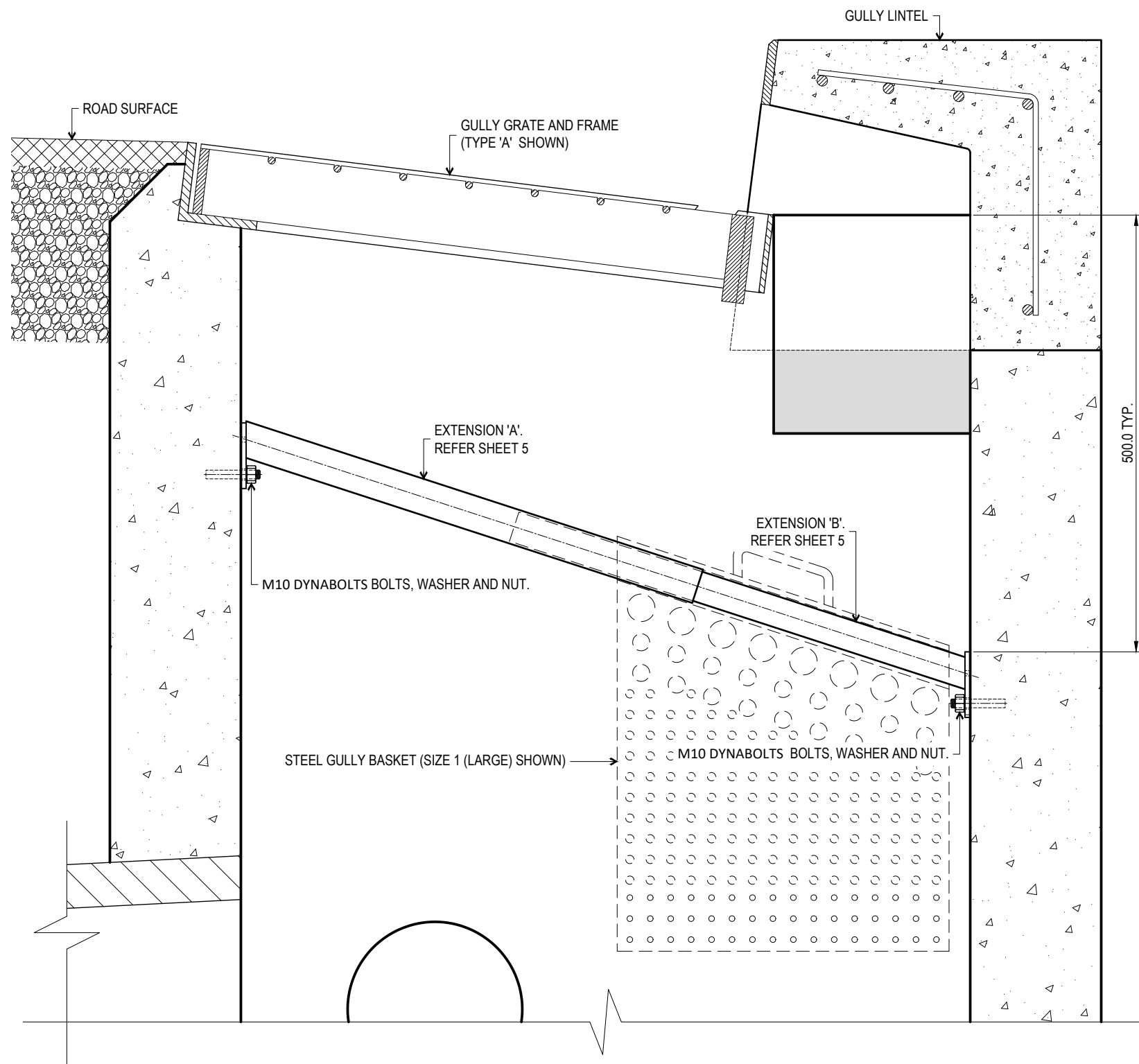
THE PURPOSE OF THIS STANDARD DRAWING IS TO PROVIDE TYPICAL DETAILS THAT SUPPORT THE DESIRED OUTCOMES OF THE BRISBANE CITY PLAN 2014 AND ASSOCIATED PLANNING SCHEME POLICIES. THE FITNESS FOR PURPOSE OF THIS STANDARD DRAWING FOR A SPECIFIC PROJECT SHOULD BE ASSESSED AND ACCEPTED BY AN APPROPRIATELY QUALIFIED DESIGNER AND/OR REGISTERED PROFESSIONAL ENGINEER OF QUEENSLAND (RPEQ).



BRISBANE CITY COUNCIL STANDARD DRAWING

STEEL GULLY BASKET
BASKET SUPPORT BRACKETS AND
HANDLE DETAILS - SHEET 9 OF 10

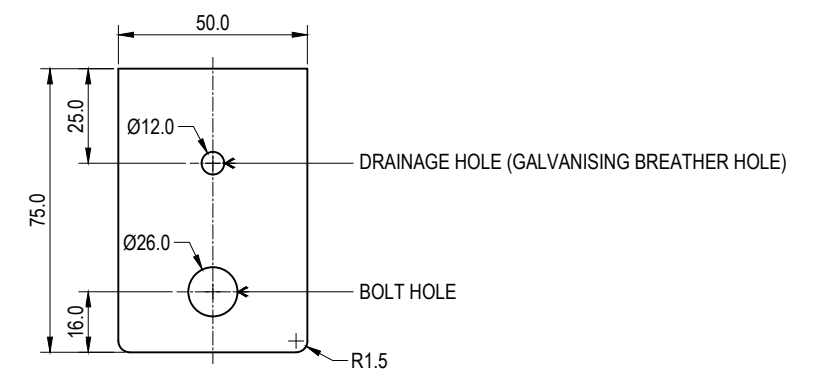
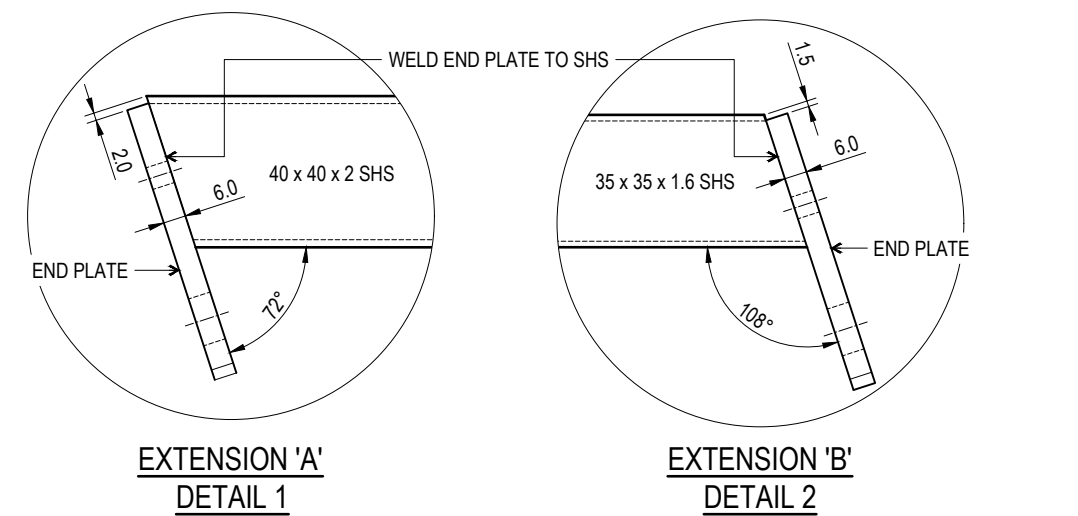
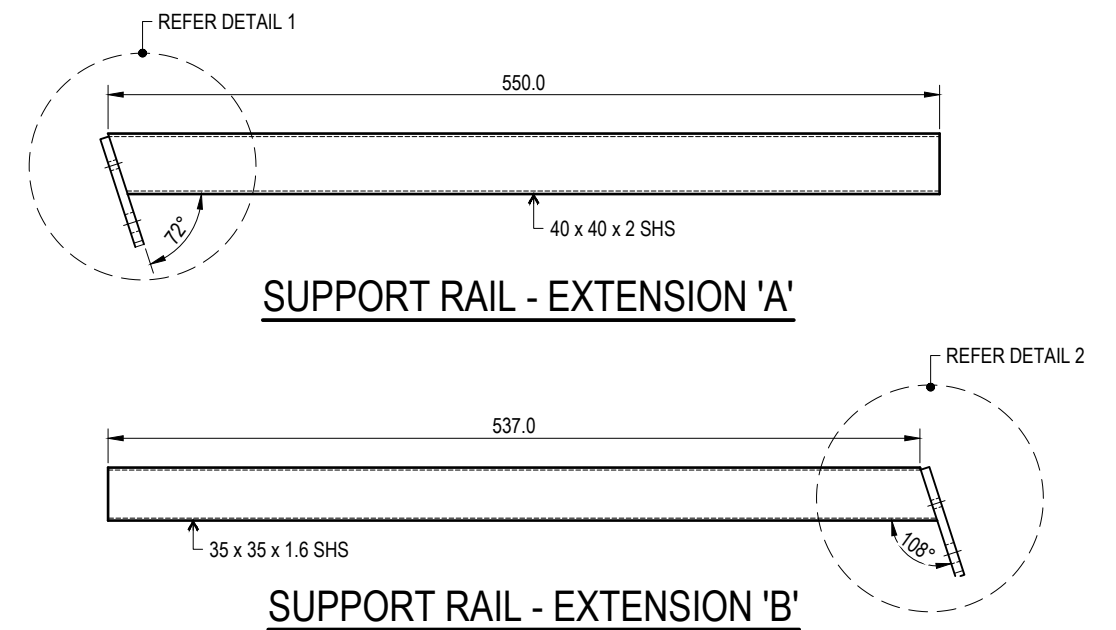
PUBLISH DATE		SEP 2024
SCALE		NOT TO SCALE
DRAWING NUMBER		BSD-8060
ORIGINAL SIZE	REVISION	
A3	C	



GULLY BASKET INSTALLATION
STANDARD TYPE 'A' GULLY

NOTES:

1. SUPPORT RAIL MATERIAL TO MATCH BASKET MATERIAL.
2. MATERIAL:
 - EXTENSION 'A': 40 x 40 x 2 SHS.
 - EXTENSION 'B': 35 x 35 x 1.6 SHS.
2. ALL WELDS TO BE 4mm CFW UNLESS NOTED OTHERWISE.
3. HOT DIP GALVANISE SUPPORT RAILS (EXTENSIONS) TO AS/NZS4680 AFTER FABRICATION.
4. AFTER GALVANISING, ENSURE EXTENSION 'B' IS ABLE TO BE INSERTED INTO EXTENSION 'A'.
5. 2 PAIRS REQUIRED FOR EACH GULLY BASKET.
6. ALL SHARP EDGES ARE TO BE REMOVED. THIS IS TO OCCUR PRIOR TO GALVANISING FOR BASKETS FABRICATED FROM MILD STEEL.
7. ALL DIMENSIONS IN MILLIMETRES (U.N.O.).



SUPPORT RAIL END PLATE
6mm THICK

THE PURPOSE OF THIS STANDARD DRAWING IS TO PROVIDE TYPICAL DETAILS THAT SUPPORT THE DESIRED OUTCOMES OF THE BRISBANE CITY PLAN 2014 AND ASSOCIATED PLANNING SCHEME POLICIES. THE FITNESS FOR PURPOSE OF THIS STANDARD DRAWING FOR A SPECIFIC PROJECT SHOULD BE ASSESSED AND ACCEPTED BY AN APPROPRIATELY QUALIFIED DESIGNER AND/OR REGISTERED PROFESSIONAL ENGINEER OF QUEENSLAND (RPEQ).



BRISBANE CITY COUNCIL STANDARD DRAWING

STEEL GULLY BASKET
SUPPORT RAILS (EXTENSIONS) AND
INSTALLATION DETAILS - SHEET 10 OF 10

PUBLISH DATE		SEP 2024
SCALE		NOT TO SCALE
DRAWING NUMBER		BSD-8060
ORIGINAL SIZE	REVISION	
A3	C	